

Table 2: Echocardiographic data acquisition and definitions

Echocardiographic parameters	Acquisition
Anteroposterior diameter	The distance between the origin of the 2 leaflets: it is measured from the mid-oesophageal long axis view at the end of diastole
Aortomitral angle	The angle between the mitral annulus plane and the aortic annulus plane: it is measured from the mid-oesophageal long axis view in mid-systole
Posterior and anterior leaflet length	It is recorded from the mid-oesophageal long-axis view by selecting the best frame to visualize the 2 leaflets completely (from the mitral annulus plane to the leaflet edge)
Left ventricular end-diastolic diameter	It is recorded from the mid-oesophageal 2-chamber or transgastric mid-papillary short-axis view
Basal septum values	It is measured from the mid-oesophageal long axis view at the end of diastole
Coaptation-septum distance	The distance between the basal septum and the point where leaflet tips touch themselves: these last values were acquired from the mid-oesophageal long axis view at the end of diastole

Table 4: Independent predictors of SAM (categorical variables)

Variable	Univariate		Multivariate	
	OR (95% CI)	P-value	OR (95% CI)	P-value
Ejection fraction >65%	1.38 (0.54-1.38)	0.51		0.79
End-systolic diameter <35 mm	2.51 (0.99-6.34)	0.053		0.680
End-diastolic diameter <45 mm	3.21 (1.37-7.57)	0.007	3.90 (1.16-13.2)	0.028
Septal diameter (basal) ≥15 mm	4.78 (2.06-11.1)	<0.001	3.63 (1.07-12.3)	0.039
Coaptation-septum distance <25 mm	8.40 (3.27-22.5)	<0.001	5.09 (1.72-15.1)	0.003
Anterior leaflet length ≥25 mm	4.10 (0.96-17.6)	0.058	5.70 (0.98-33.2)	0.052
Posterior leaflet length ≥15 mm	2.61 (1.18-5.79)	0.018	3.80 (1.34-10.7)	0.012
Aorto-mitral angle <120° ^a	3.49 (1.62-7.56)	0.001	2.74 (1.04-7.20)	0.041

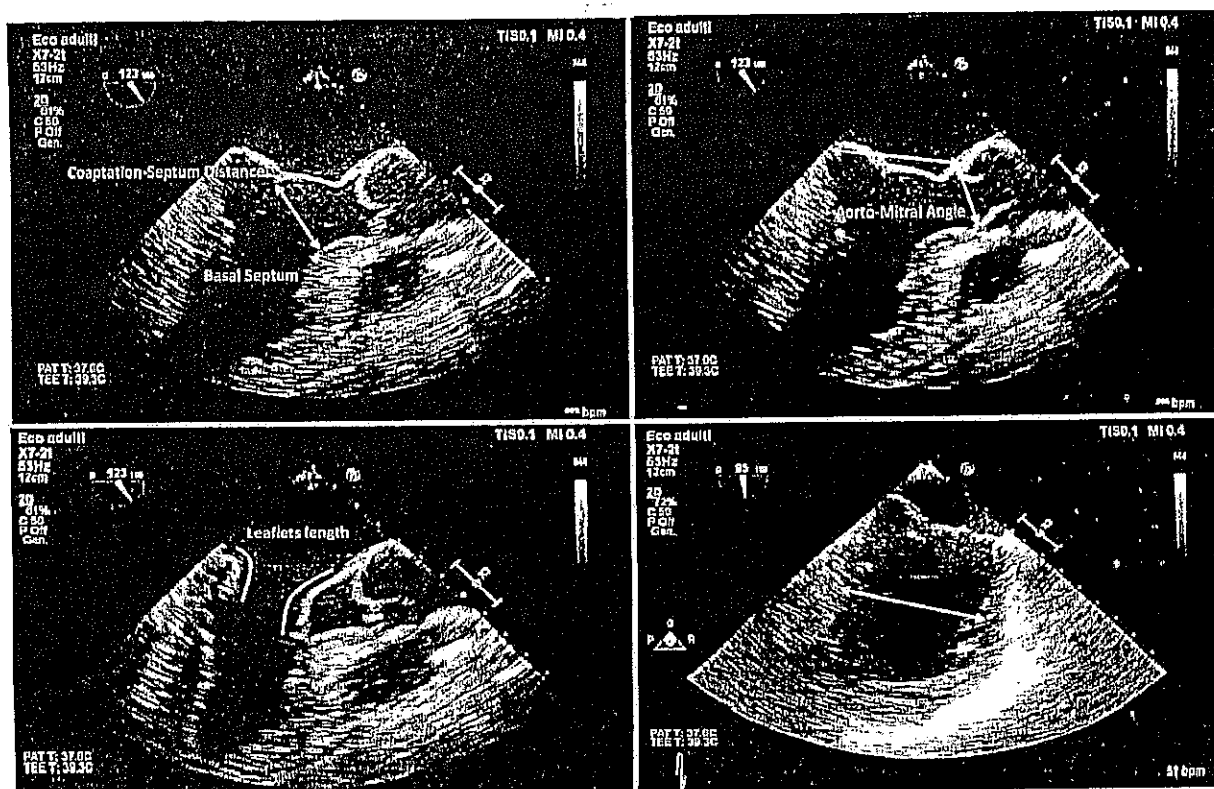


Figure 1: Transoesophageal echocardiographic views with the 6 parameters chosen as predictors of systolic anterior motion: coaptation-septum distance, basal septum diameter, posterior leaflet length, anterior leaflet length and end-diastolic diameter.